

FOR LEASE

501 15TH STREET

MOLINE, IL 61265



PRICE

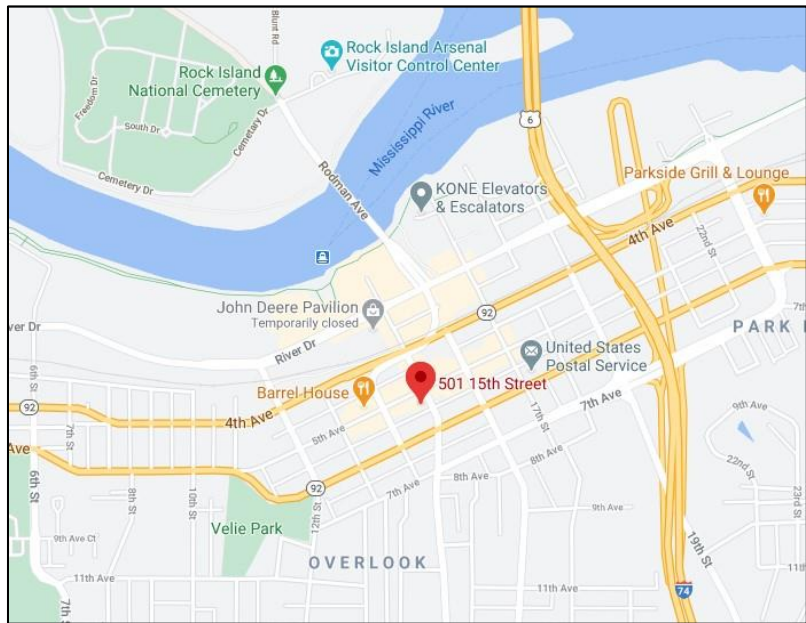
- \$9.00/SF, NNN
- \$5.00/SF, GROSS

AVAILABLE SPACE

- MAIN LEVEL: 5,031 SF (\$9/SF, NNN)
- MEZZANINE: 4,504 SF (\$9/SF, NNN)
- LOWER LEVEL: 6,701 SF (\$5/SF, GROSS)

BUILDING FEATURES

- UNIQUE SPACE AVAILABLE FOR IMMEDIATE OCCUPANCY
- ZONED B-2 (CENTRAL BUSINESS DISTRICT)
- WELL LOCATED IN THE HEART OF DOWNTOWN MOLINE
- EASY ACCESS TO RT 92, HWY 6 & I-74



CONTACT US



Max Gellerman

563 676 2806

mgellermans@thehawkeyegroup.com

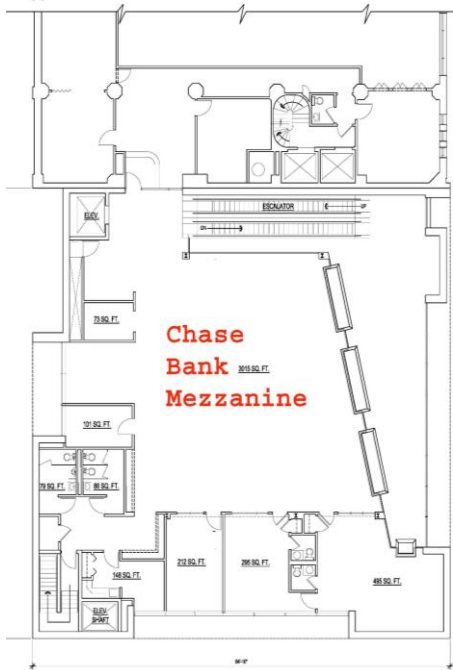
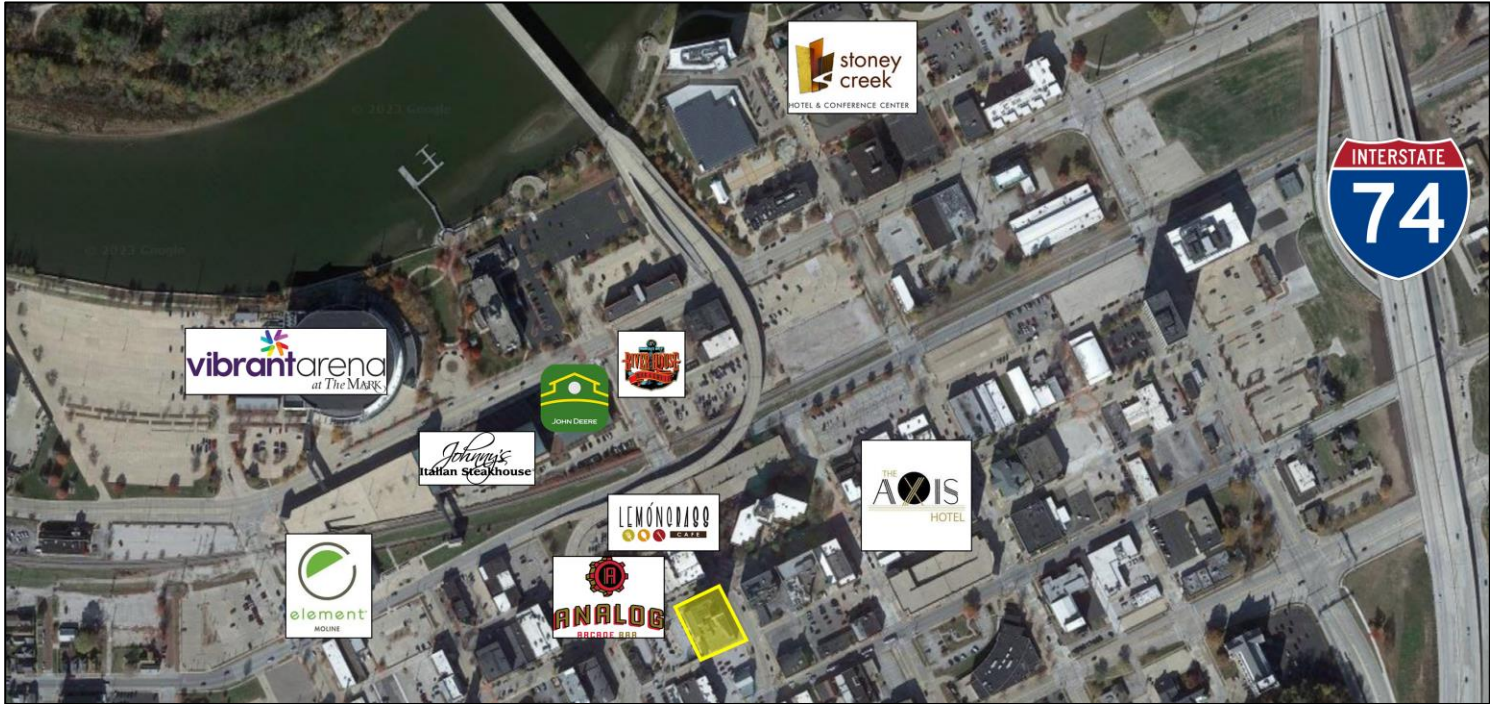
1850 E. 54th Street • Davenport, Iowa 52807 • Office: 563.344.4295 • www.TheHawkeyeGroup.com

NO WARRANTY OR REPRESENTATION, EXPRESS OR IMPLIED, IS MADE AS TO THE ACCURACY OF THE INFORMATION CONTAINED HEREIN, AND THE SAME IS SUBMITTED SUBJECT TO ERRORS, OMISSIONS, CHANGE OF PRICE, RENTAL OR OTHER CONDITIONS, PRIOR SALE, LEASE OR FINANCING, OR WITHDRAWAL WITHOUT NOTICE, AND OF ANY SPECIAL LISTING CONDITIONS IMPOSED BY OUR PRINCIPALS. NO WARRANTIES OR REPRESENTATIONS ARE MADE AS TO THE CONDITION OF THE PROPERTY OR ANY HAZARDS CONTAINED THEREIN ARE ANY TO BE IMPLIED. BROKERS ARE LICENSED IN IOWA & ILLINOIS

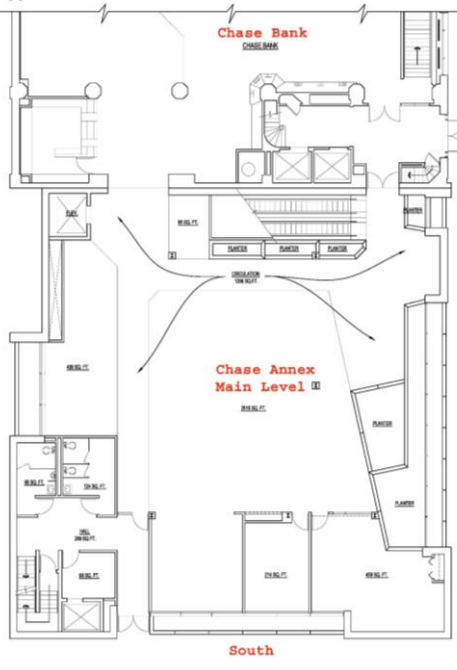
FOR LEASE

501 15TH STREET

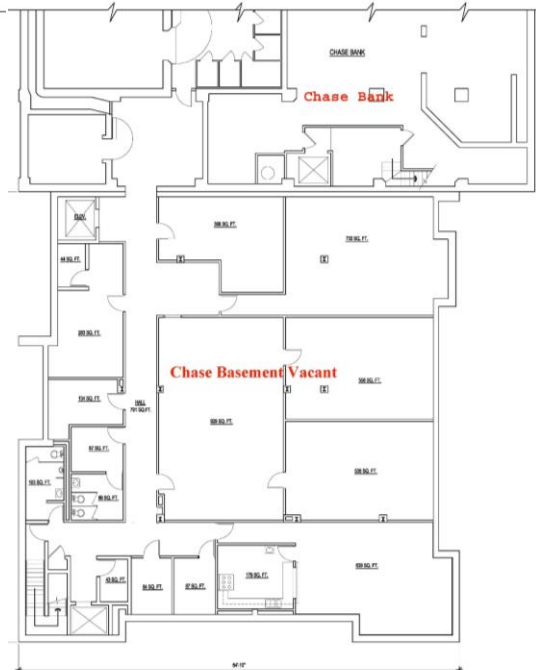
MOLINE, IL 61265



MEZZANINE FLOOR PLAN - EXISTING
SCALE 1/8" = 1'-0"



FIRST FLOOR PLAN - EXISTING
SCALE 1/8" = 1'-0"



LOWER LEVEL FLOOR PLAN - EXISTING
SCALE 1/8" = 1'-0"



Max Gellerman

563 676 2806

mgellermans@thehawkeyegroup.com

1850 E. 54th Street • Davenport, Iowa 52807 • Office: 563.344.4295 • www.TheHawkeyeGroup.com

NO WARRANTY OR REPRESENTATION, EXPRESS OR IMPLIED, IS MADE AS TO THE ACCURACY OF THE INFORMATION CONTAINED HEREIN, AND THE SAME IS SUBMITTED SUBJECT TO ERRORS, OMISSIONS, CHANGE OF PRICE, RENTAL OR OTHER CONDITIONS, PRIOR SALE, LEASE OR FINANCING, OR WITHDRAWAL WITHOUT NOTICE, AND OF ANY SPECIAL LISTING CONDITIONS IMPOSED BY OUR PRINCIPALS. NO WARRANTIES OR REPRESENTATIONS ARE MADE AS TO THE CONDITION OF THE PROPERTY OR ANY HAZARDS CONTAINED THEREIN ARE ANY TO BE IMPLIED. BROKERS ARE LICENSED IN IOWA & ILLINOIS