

FOR SALE

3828 & 3842 JEFFERSON AVENUE

DAVENPORT, IA 52807



PRICE

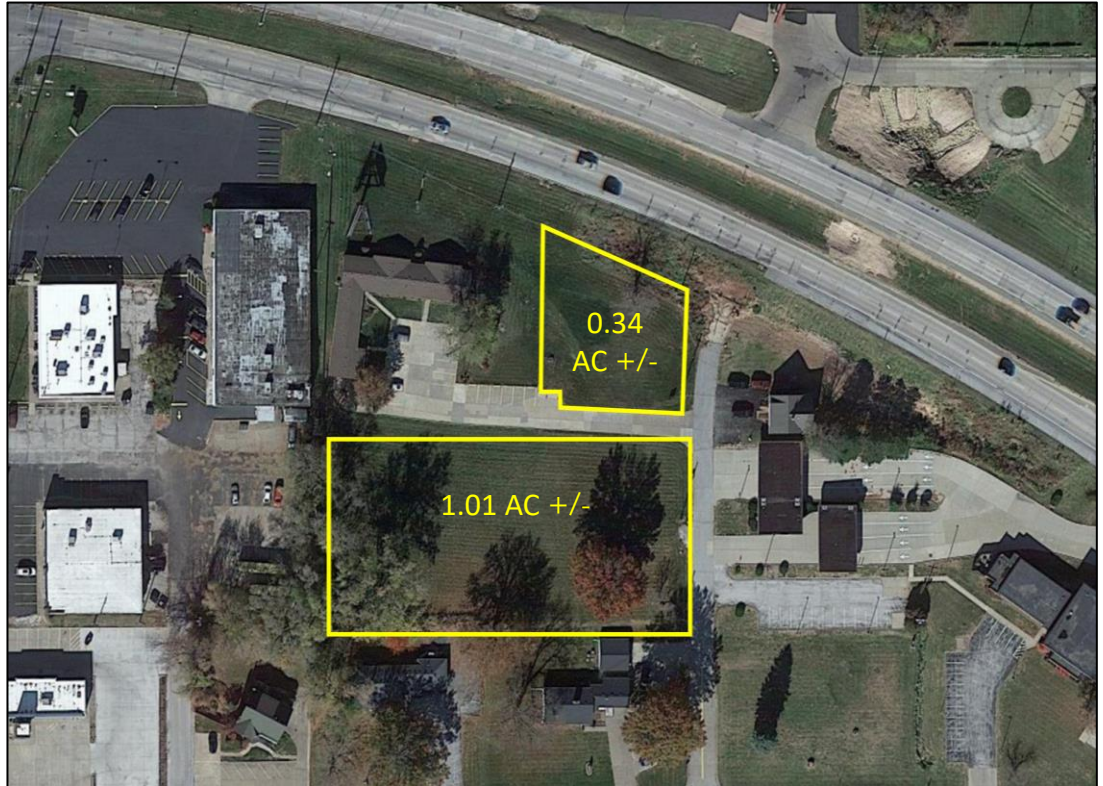
- 3828 - **\$249,500**
- 3842 - **\$149,500**

AVAILABLE SPACE

- 3828 - 1.01 AC +/-
- 3842 - 0.34 AC +/-

PROPERTY FEATURES

- HIGH VISIBILITY & HIGH TRAFFIC COUNTS FROM E KIMBERLY RD (HWY 6)
- ALL UTILITIES FROM PREVIOUSLY DEMOLISHED BUILDING HAVE BEEN PROFESSIONALLY REMOVED
- ZONE C-2 CORRIDOR COMMERCIAL



CONTACT US



Jeff Heuer
563 508 5998
jheuer@thehawkeyegroup.com

FOR SALE

3828 & 3842 JEFFERSON AVENUE

DAVENPORT, IA 52807

